



ector Industries, Inc.

2125 S. West Avenue Waukesha, WI 53189

FA-900 BY-PASS FEEDER OPERATING INSTRUCTIONS

GENERAL

FA-900 and FA-900AL feeders are designed for operating at a maximum of 200 degrees Fahrenheit and 200 psi working pressure.

TO REPLACE BAG

Close inlet and outlet valves and drain by opening valve and petcock. Remove cove and replace filter bag if needed. Replace cover, close drain valve, open inlet and outlet valves slowly, and close petcock after all air has been forced from the feeder.

This procedure should be done weekly to check filter bag.

WARNINGS

Do not attempt to remove cap while chemical feeder is in operation.

Contents may be hot or contain irritants.

Use with water only – do not use for steam, air or gas.

Cap should seal with hand tight pressure only. Do not strike cap with any tool to seal or unseal.

Consult your chemical supplier for proper use of this tank with the chemical.

High Flow Bypass Filter Feeder

(Stainless Steel Basket & "Sock" Filter Bag Included)

Model	Approx. Capacity	A	B	C	D
FA-900	7 Gallons	20"	4-1/2"	28-1/2"	10"

Max operating specifications: 200psi (13.8bar), 200°F (93°C)

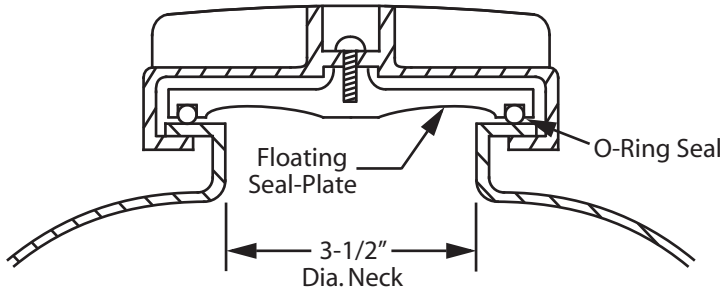
Feeders do not come furnished with valves or fittings. Valving and accessories sold separately.

Control valve not required when "Slug Feeding"

Briquette or liquid chemicals may be added directly to feeder. Powdered chemicals should first be pre-dissolved in water before adding to feeder.

① 1/4" Female NPT Fitting

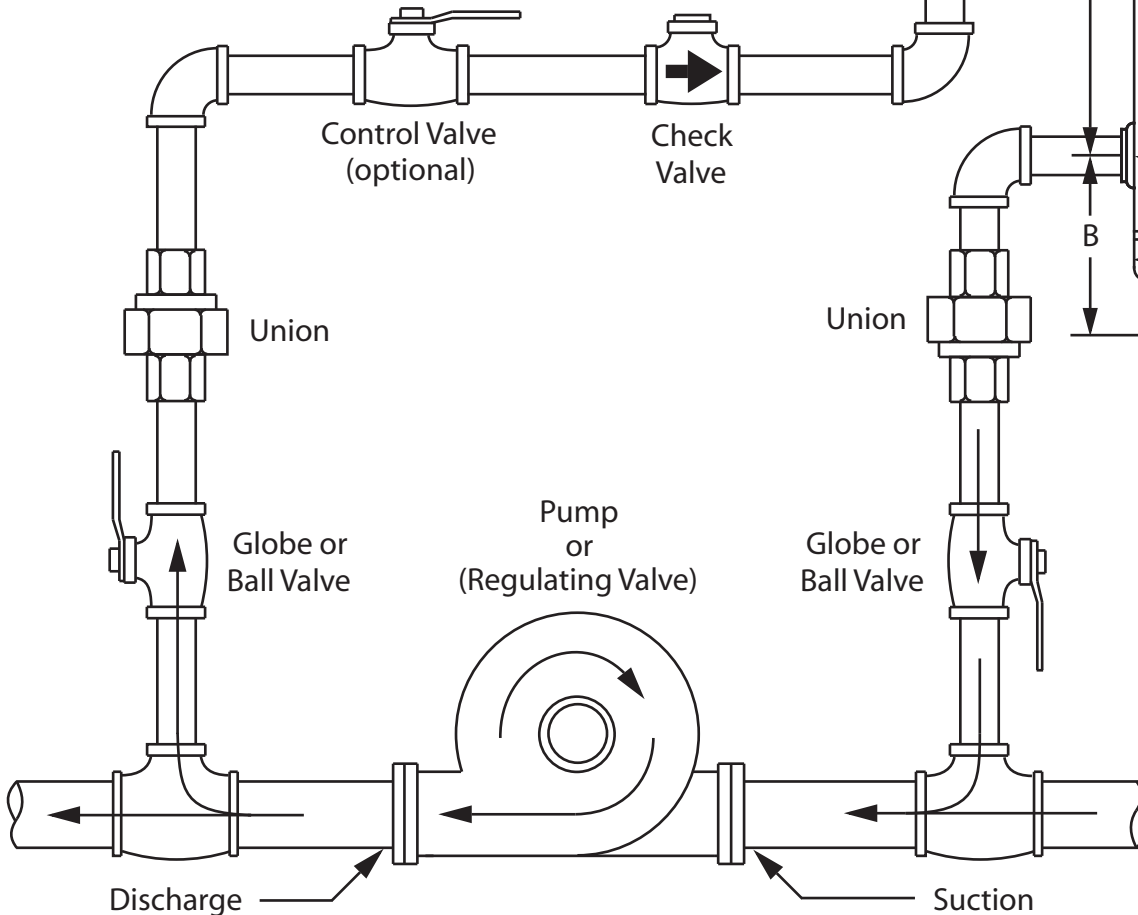
② 1" Female NPT Fitting



Cross-disection of the 1/4 Turn Fleck Closure assembly.

Features a self-aligning floating seal-plate that ensures a perfect seat between the closure and neck of the feeder.

Closure tightens with pressure which prevents the cap from being removed until the pressure is released.



3-1/2" Fill Cap

②

①

A

C

B

②

D

②

Drain Valve

